



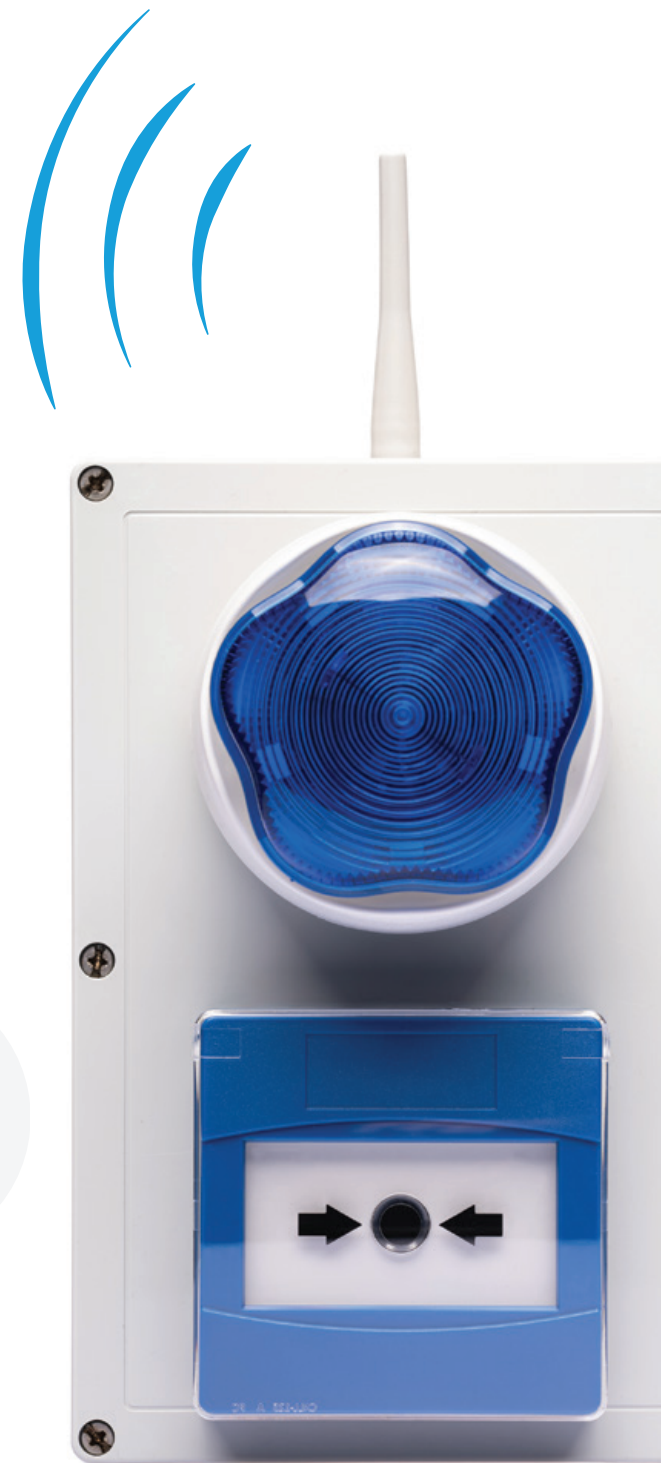
**Elementary**  
Technology



# LOCAS

LOCKDOWN AND INVACUATION ALERT SYSTEM

**Keeping your school  
community safe**





*At Elementary Technology we're here to help you keep your pupils, staff and visitors safe.*

*Tim Kent, EdTech Consultant*

The escalating threat of firearms, weapons and terrorism in places such as schools demands swift and effective preventative measures.

In the UK, the risk is real. To combat potential incidents, we must heighten staff awareness, optimise CCTV use, amplify deterrent communications and establish active security zones.

Whilst 100% prevention is uncertain, a robust dynamic lockdown procedure can significantly frustrate and delay attackers - ensuring the safety of students and staff.





**How prepared is your school?**

# THE IMPORTANCE OF ALERTS AND LOCKDOWNS

Procedures to protect staff and students in the event of an emergency have never been more important. Whether evacuating in the event of a fire or invacuating to a safe room if there is a problem on or around site, it's important there is a clear and efficient alert - one that is easily distinguishable to all.

The DfE recommends schools and other education establishments to utilise different alert sounds to prompt the correct response - giving everyone a clear, quick message. With an efficient and distinct alert you are able to minimise the time your community needs to react and stay safe.

As a standalone system used alongside your existing firealarm, our LOCAS system achieves this.

In addition, as a battery powered and wireless system, no new cables are needed and the units are able to be installed in the optimal place for best coverage for an efficient and coordinated response.

All this makes LOCAS easy to manage.

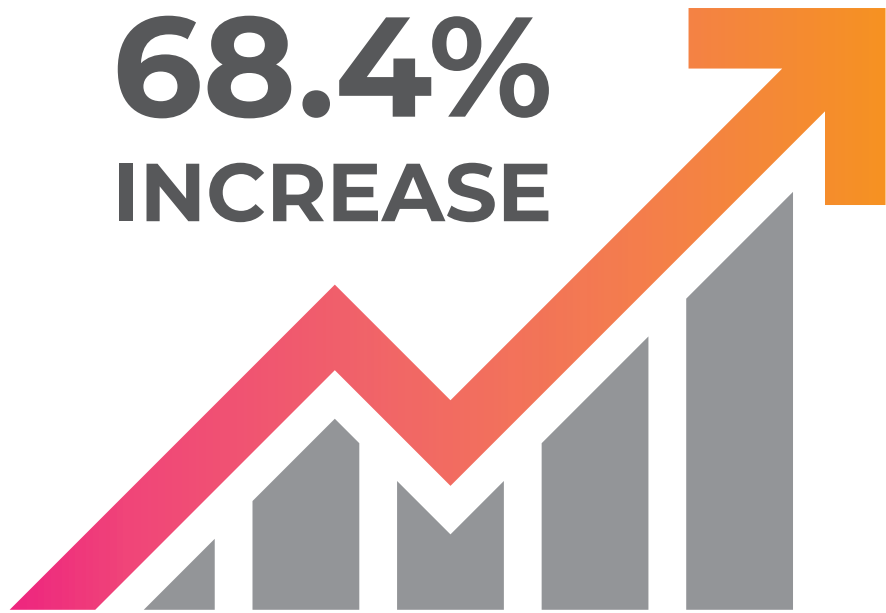


# INCREASE IN CRIME

School specific crime is increasing at the same time that we're seeing a UK-wide exponential rise in violent knife related incidents. An OFSTED report from September 2019 found that, in the 12 months prior, knife crime in schools had increased by 68.4% across England and Wales, (excluding Greater Manchester Police area). On top of this, it was concluded that knife crime is...

**“a societal problem that cannot be tackled by schools or single agencies alone.”**

**68.4%**  
**INCREASE**



This highlights the need for efficient and effective school security that is prepared for all eventualities. One that is robust to reduce/prevent the chance of injury if an incident were to occur.

Key to the success of these procedures is strong and reliable communication - getting the right message out as quickly as possible to as many as possible.



# LOCKDOWN VS INVACUATION

Within a lockdown procedure, there are two levels of response to an incident - an **invacuation** and a **lockdown**.

## WHAT IS AN INVACUATION?

An invacuation is the process for getting everybody inside and securing the building. In most cases children usually stay in their classroom and the school day continues as normal - just with everyone staying indoors to protect against an external issue. An invacuation may be required in the case of:

- Local pollution from a nearby fire or chemical release
- A potentially dangerous animal in the school grounds
- An incident or civil disturbance in the area that might affect the school

The invacuation allows the school to stay safe and affords more time for further planning to be carried out to dynamically react to the external situation.



# WHAT IS A LOCKDOWN?

When a lockdown is triggered everyone on the premises is moved from a potential area of danger to a place they can't be seen from outside of the building. This is usually into a 'safe room', which can be locked and have at least two exits should the need arise.

A Lockdown would only be used for a serious and current threat to those in the building such as:

- An aggrieved, disturbed or intoxicated person trying to gain access to the building (which could be a parent or stranger)
- There is an intruder on the site
- There is an internal threat from a student

For this sort of procedure to work, a lockdown alarm needs to be clearly distinguishable from any other alarm on site to result in the correct response, protecting as many of the school community as possible.



A blurred classroom scene. In the foreground, the back of a student's head with long blonde hair is visible on the right, and another student's hand is raised in the air on the left. In the background, a teacher in a light purple shirt and dark tie stands at the front of the room, gesturing. The room contains bookshelves and a whiteboard.

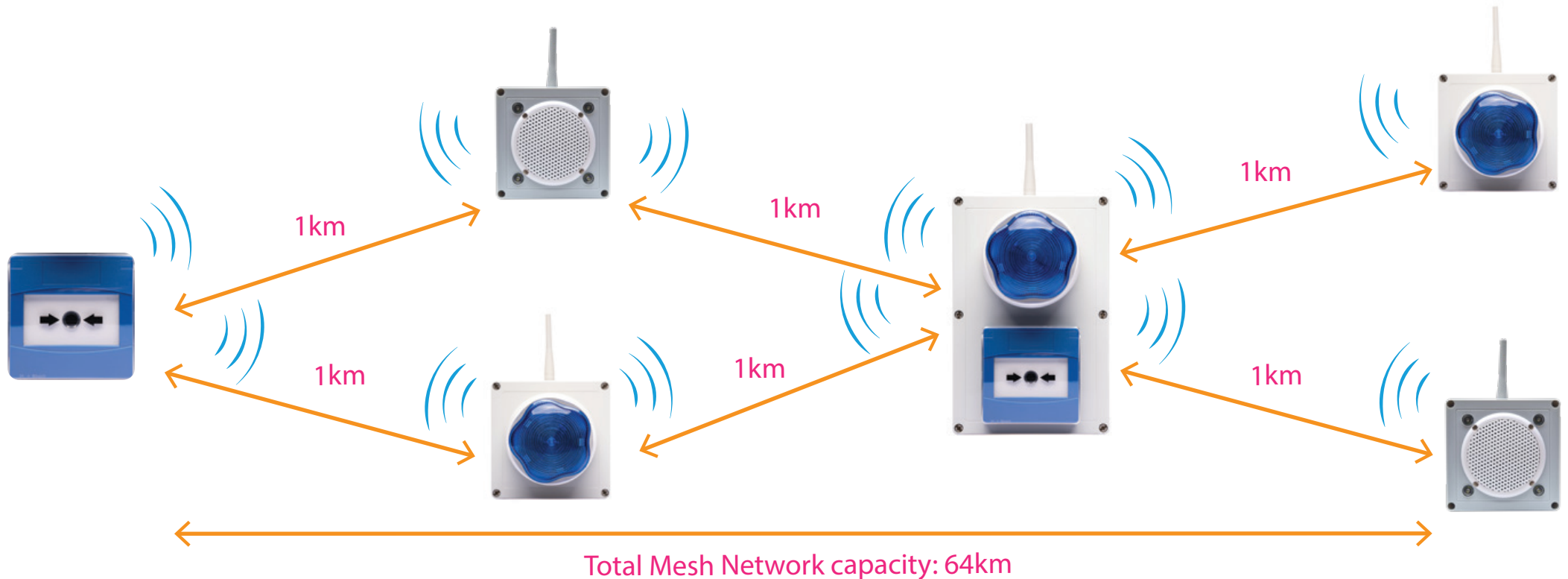
**A solution to aid site safety**



# MEET LOCAS

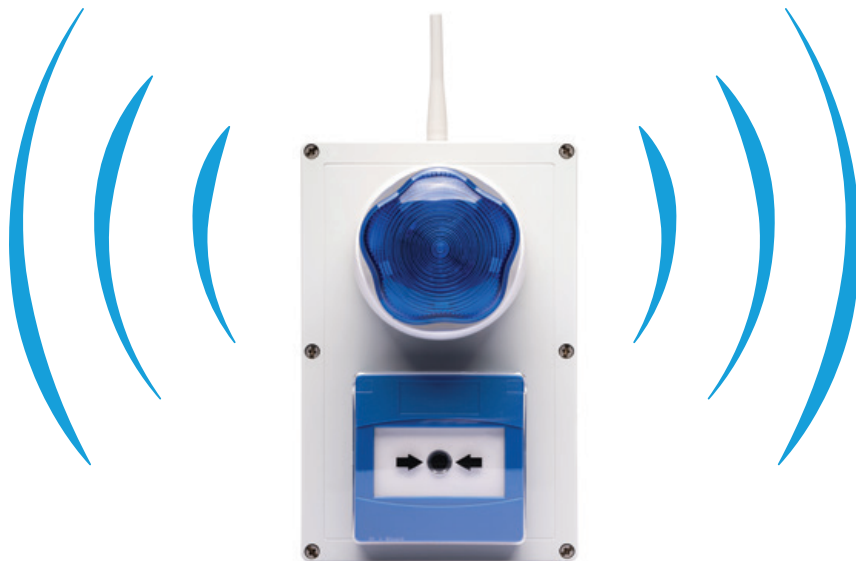
LOCAS is a lockdown and invacuation alert system that has a number of features ideally suited to your environment and needs.

Designed to provide a clear warning in the event of an incident, LOCAS boasts an impressive 1km line of sight wireless transmission range between units - with up to 64 units meshing together as part of a single network. In addition to the wireless signal, they are also IP66 rated and battery operated for outdoor use avoiding the need for cables. The units can be quickly mounted in any location.



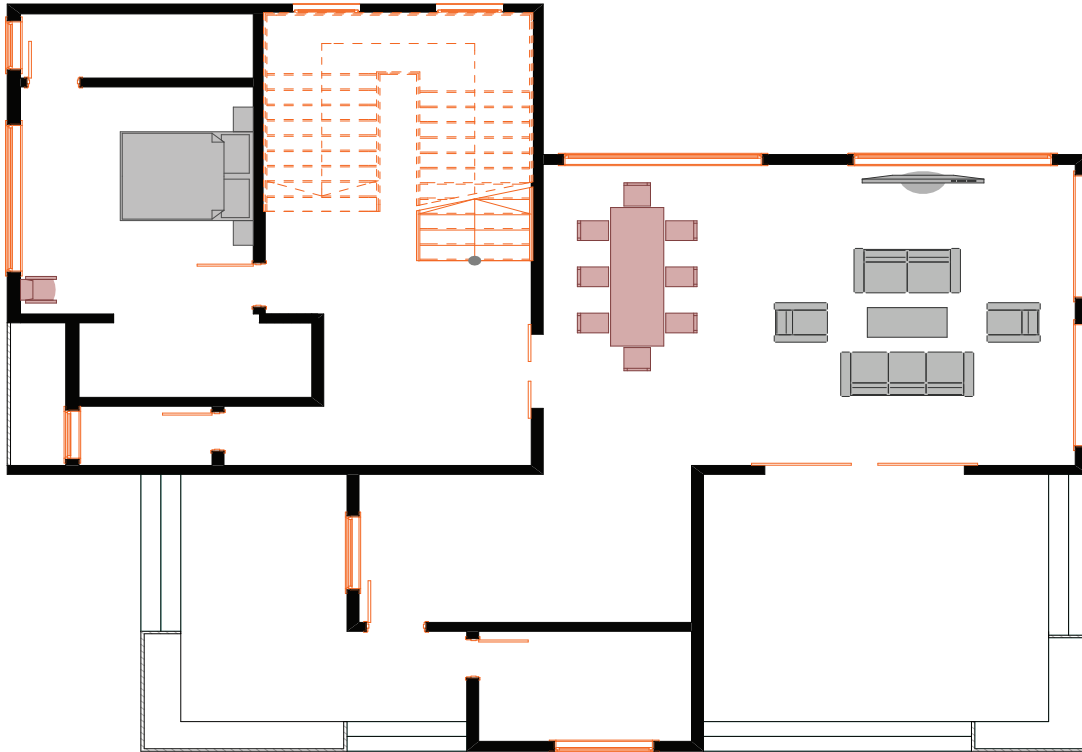
# MEET LOCAS

In situations where an evacuation or lockdown is needed it's important everyone knows what is happening as quickly as possible. An annunciator/sounder is paired with a flashing beacon light, so, when triggered, an audio and visual warning are emitted. Both internal (IP54) and external (IP66) versions are available to cover your entire site. It's important this is easily differentiated from your existing fire alarm or bell system - the sounders ship with a large range of alert sounds so the system can be tailored to your site. In addition the annunciator can be configured with pre-recorded audio alerts such as "evacuation - remain in place".



Utilising one master unit and slave units, LOCAS can be operated as a standalone system. Included is a key to reset the system via the master unit post activation, rather than having to locate and reset the original alert source unit. The system can also be monitored and controlled from one central location by adding a Genesis IP Masthead for use with the PC app. This gives features for monitoring, activating and testing the units, along with setting up activation email alerts, and allows you to see which unit activated. A Remote Active fob with false activation protection is also available.





# PROTECT YOUR SCHOOL

Getting started couldn't be simpler.

Email or phone and talk to us about how our LOCAS system can help you protect your staff and students.

By providing us with a floorplan, we'll be able to spec your solution and provide you with an indicative cost, without the need for a full survey.



**0113 818 7930**



**[enquiries@elementaryuk.com](mailto:enquiries@elementaryuk.com)**

**Installation was quick and easy.  
The LOCAS system has given us  
peace of mind that we're doing  
all we can to safeguard  
our community.**

Multi-Academy Trust Safeguarding Lead



Helping **schools** use **technology** to create **safer environments**



4 Airport West  
Lancaster Way  
Yeadon  
Leeds  
LS19 7ZA

[www.elementaryuk.com](http://www.elementaryuk.com)



Tel: 0113 818 7930

